

# Haynesville Rock Properties

Qi Ren

Early career PhD student

Advisor: Mrinal Sen & Kyle Spikes

THE UNIVERSITY OF TEXAS AT AUSTIN

**JACKSON**

SCHOOL OF GEOSCIENCES

# BACKGROUND

- B.S. Applied Physics Jun.2010  
USTC, China  
Up-conversion material properties and application
- Graduate study Aug.2010-Dec.2011  
Physics Department, UT-Austin
- Ph.D student in Geophysics Jan.2012  
UT-Austin
- Engineering Intern Summer 2011  
ETC, Chevron

THE UNIVERSITY OF TEXAS AT AUSTIN

**JACKSON**

SCHOOL OF GEOSCIENCES

# Previous Case Study

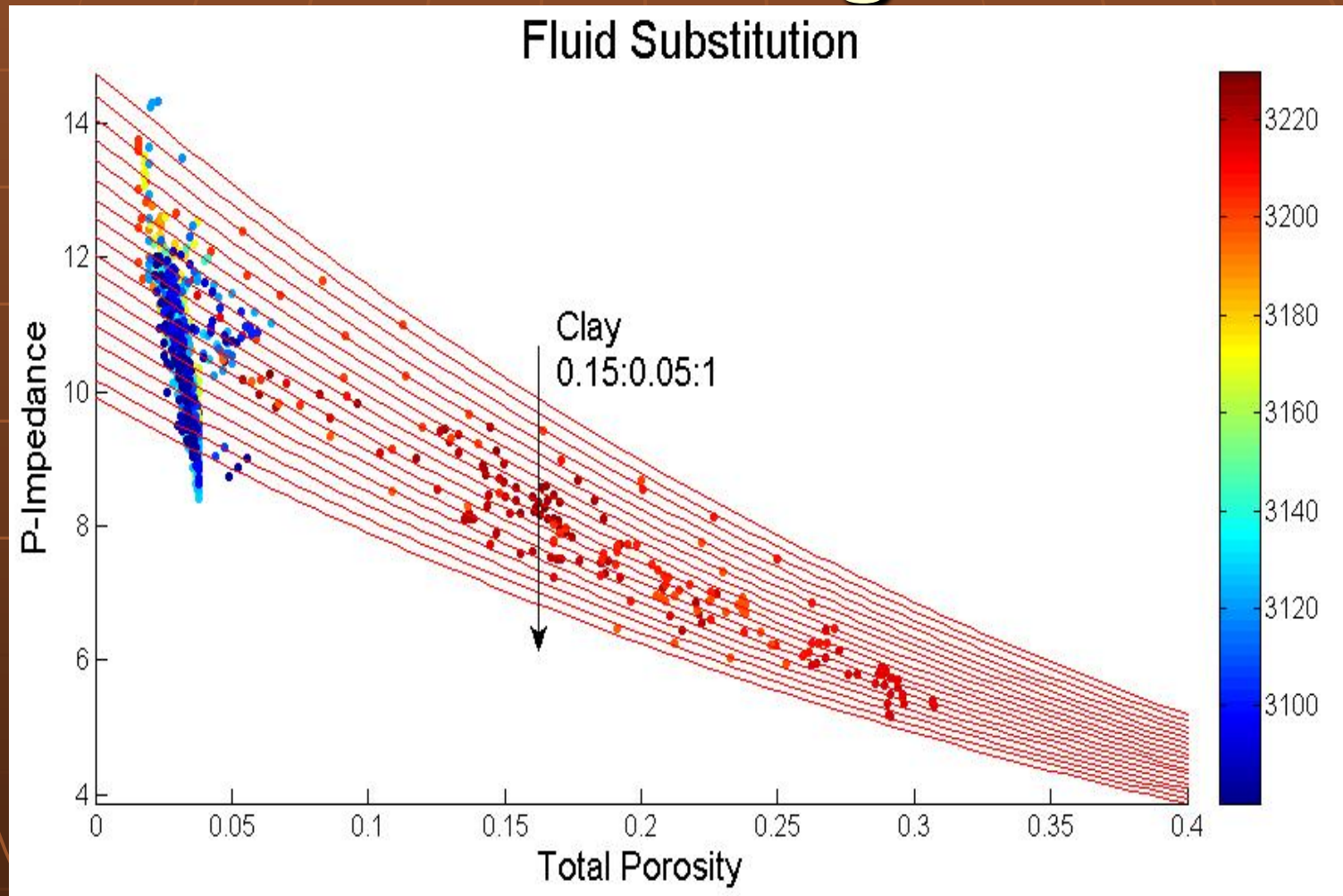
- Rock Property Modeling
  - Ibhubesi Field, West South Africa
  - Target: Porosity- Impedance relation
  - Influence Factors:  $V_{clay}$ ,  $S_w$ , Poro
- Model & Method:
  - Raymer relation
  - Fluid Substitution

THE UNIVERSITY OF TEXAS AT AUSTIN

**JACKSON**

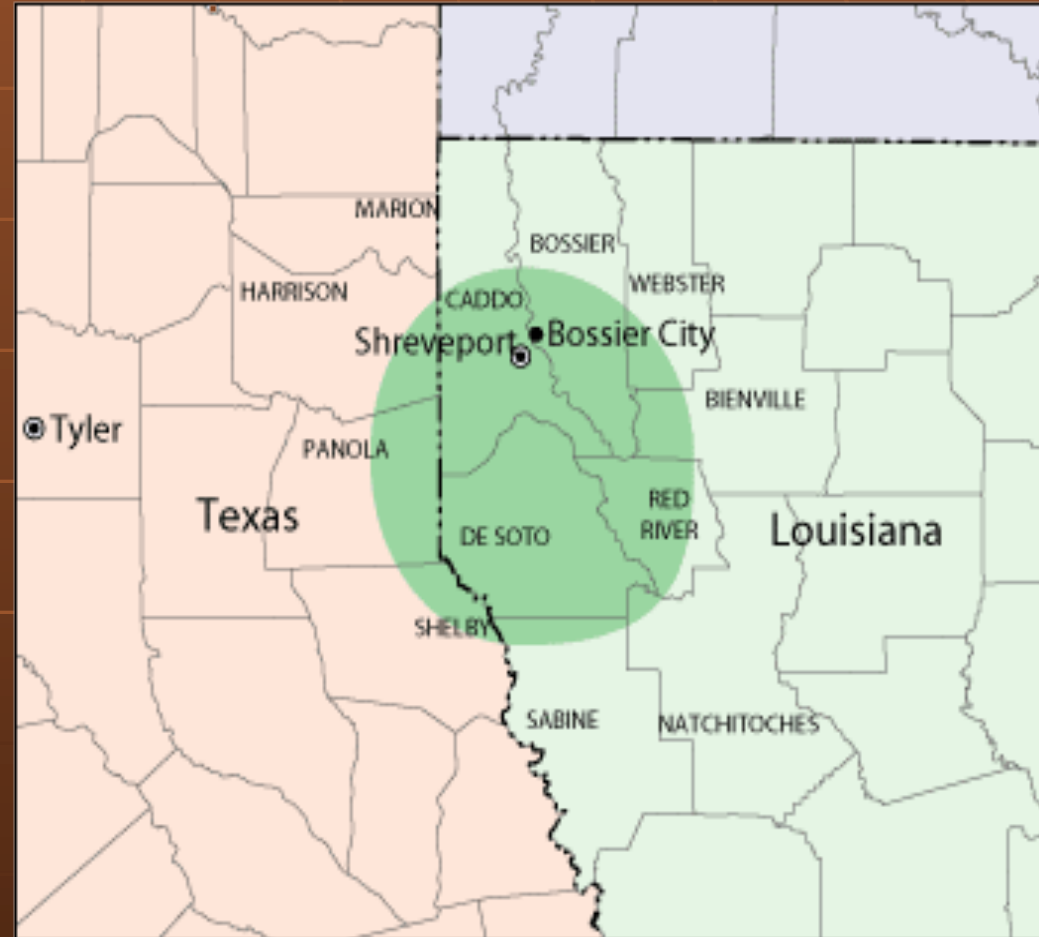
SCHOOL OF GEOSCIENCES

# Ibhubesi Field Rock Property Modeling



# Haynesville Rock Properties

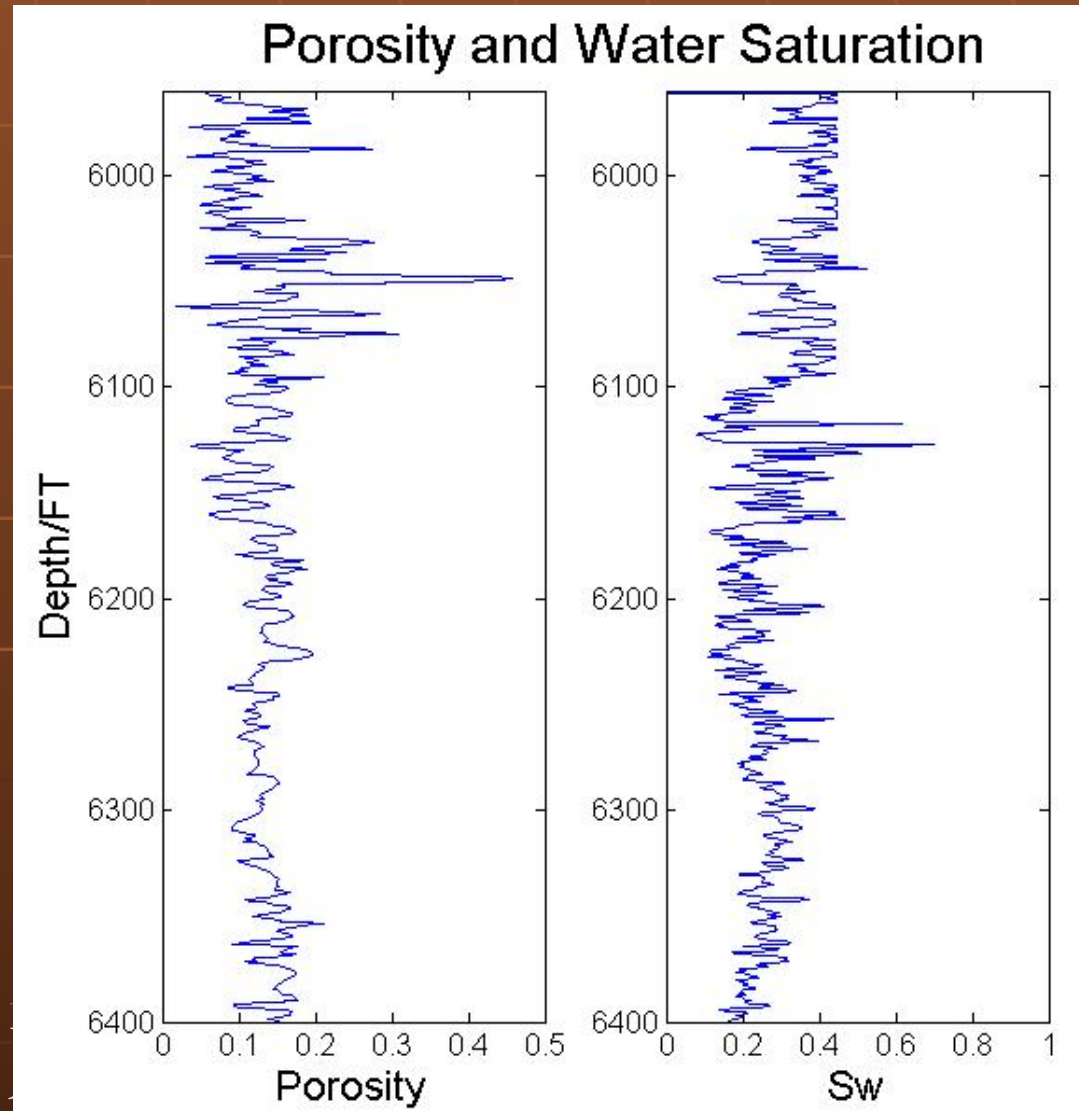
- Louisiana, Texas
- One of the Largest natural gas field
- Depth 10,000-13,000 feet  
200-300 feet thick
- Location: Harrison
- Two well



[http://petesplace-peter.blogspot.com/2008\\_08\\_01\\_archive.html](http://petesplace-peter.blogspot.com/2008_08_01_archive.html)

# Haynesville Rock Properties

- Aspect ratio
- Composition
- Fluid content



# Special Thanks to our Sponsors

